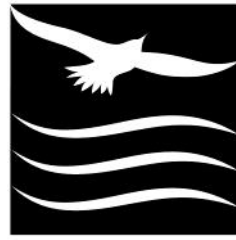
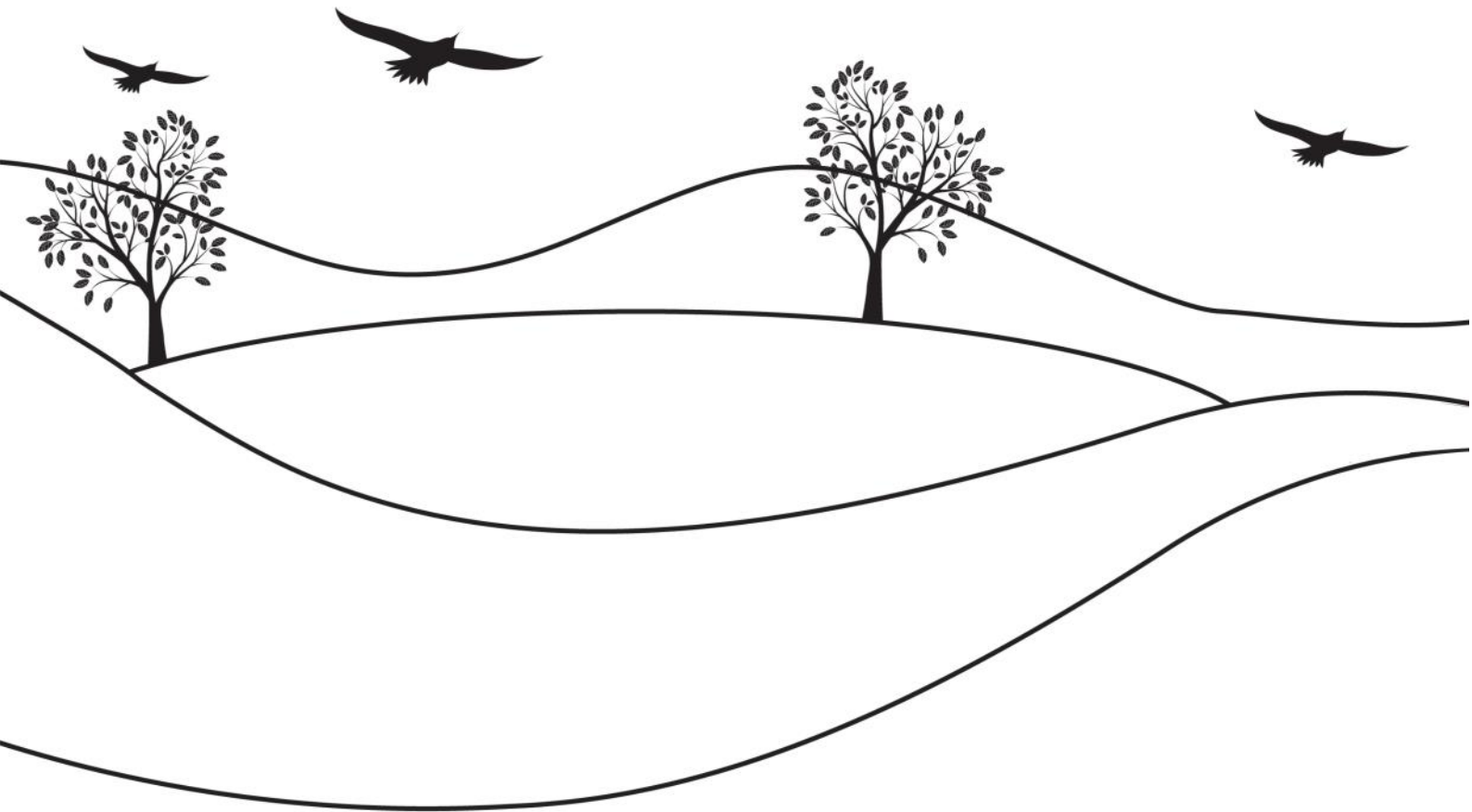


Supplementary Information



Ormiston
RIVERS
Academy



Deepening learning, raising aspiration



An **OAT** Academy

Contents

| | |
|--------|--|
| 3 | A Welcome Message from the Principal |
| 4 | Academy Community |
| 5 | Entry into the Academy |
| 6 | The Curriculum |
| 7 | Exams, Ofsted |
| 8 | Able, Gifted and Talented Provision, Special Educational Needs Provision |
| 9 - 11 | Uniform Policy |
| 12 | Admissions Policy |
| 13 | The Academy Day |
| | Term and Holiday Dates |
| 14 | Governing Body |
| 15 | Academy Staff |
| 16 | Academy Details |

A Welcome Message from the Principal

Ormiston Rivers Academy provides a welcoming environment to youngsters and parents alike. The transitional arrangements we make to ease the move between Year 6 and Year 7 for children, which can be quite difficult for some, have been highly praised. The Academy has the benefit of being smaller than the average comprehensive and this enables staff to get to know students individually and support them both to achieve their academic potential and to ensure their personal and social well being. We are delighted that as a result of this approach, our examination results have continued to see significant improvement over the past few years.

We believe that if a child is happy they will thrive and we therefore endeavour to remove any barriers to learning which may impede progress. We value two way communication in the interests of developing the very accomplished adults of tomorrow. We provide Student Support Advisors to each year group which has proven to be very effective in addressing the smaller concerns that youngsters may have before they develop into larger issues. Both parents and students are grateful for this system and the immediate support that it provides when required.

Ormiston Rivers is proud to be at the centre of society in Burnham on Crouch and the surrounding villages and we work closely with local initiatives such as the Crouch Coastal Project to help youngsters develop a sense of their integral part in the wider community, which is very much welcomed by all.

We provide a wide range of curricular and extra-curricular opportunities for youngsters. Students are able to move at their own pace academically and our most able students are provided with opportunities to progress more rapidly to more challenging courses allowing them to achieve their full potential.

The Academy is committed to ensuring that all of our students reach good standards of literacy and numeracy; we are at the forefront of new whole school initiatives in these key areas in order to ensure that all of our students achieve to the best of their ability.

The extra-curricular programme is very diverse and supplemented by input from specialists in a number of fields for example; sports coaches, air cadets, sailing instructors etc. The Academy provides a late bus Monday to Thursday to enable students to participate in the programme or to attend additional lessons or revision sessions where required.

We are very proud of our Academy and of all the youngsters within it. We would be delighted to meet with you to discuss your child's future at our Academy and share with you our ambitious plans for the future.

Joan Costello,

Principal

Academy Community

The Academy's main focus is to raise the achievement of all students by tracking and monitoring their progress. Well supported students, who feel safe in their Academy environment, will achieve academic success. It is also essential that students attend the Academy with the correct attitude and behaviour for learning.

The Academy has a team of Achievement Directors who have a strategic role and are responsible for the stringent monitoring of students' attainment and behaviour. Each year group also has a student support advisor who oversees the daily welfare of the students. This system ensures that students' academic progress is monitored with action taken to reward students when they achieve well and intervention put in place when there is underachievement.

For parents the first port of call is the student support advisor. They will deal initially with all parental enquiries. They also oversee admissions to the Academy, investigate incidents of poor behaviour for learning, contact parents regarding attendance and progress and liaise with outside agencies to support your child's learning. If parents have a concern regarding students' progress or a serious pastoral issue please contact the student support advisor at the earliest opportunity.

Achievement Directors have a key strategic role within the Academy. They oversee the tracking and monitoring of students' progress and will work with parents to address any areas of a students' behaviour or attitude that are impacting on their academic achievement.

Students will be placed in a Year 7 mentor group on admission to the Academy, following close liaison and consultation with partner primary schools and will meet with the mentor each day as part of the registration process. They will remain with this group until Year 11, meeting their mentor twice a day, and forming the close working relationship which enables effective tracking of progress. The mentor will monitor the student closely during mentor period and lead group activities to aid learning and student achievement. Mentors and parents can communicate weekly via the Academy's learning journal, which is the prime source of communication between the Academy and parents.

Mentor groups are organised after close liaison with our feeder primary schools. This ensures that our students feel settled. Interviews are held with parents during the summer term to aid transition.

Entry into the Academy

Year 7

Ormiston Rivers Academy recognises that many children find the move to secondary school very exciting, whilst others may find it daunting. We aim to minimise the anxiety and worry that can be present at this time by making sure that all new students experience some time at our Academy before their first day. We offer all new students the chance to spend a day with us sampling lessons, meeting new teachers and even using the dining room. Throughout the academic year we also have members of staff who work in collaboration with primary school staff to ease transition and ensure continuity.

We also work closely with primary school staff to ensure that those children who are most anxious, or who need the most support, are given ample opportunities to visit the Academy prior to starting in September, to ensure that they are as comfortable and secure as possible from the outset.

Sixth Form

Ormiston Rivers Academy provides an inclusive Sixth Form, offering both level 2 and 3 qualifications to meet the progression needs of our students and external applicants. Our Sixth Form provides excellent teaching and learning across the spectrum of subjects. Students can choose to study a wide range of A Level qualifications or choose from a variety of vocational subjects. In addition there is an excellent enrichment programme. The Sixth Form will provide every student with a first class education. Through high quality educational resources and excellent teaching and learning, students will have clear progression pathways to university and employment.

At the heart of the Sixth Form lies a strong system of pastoral care. The Sixth Form pastoral team are on hand to support students with their studies, career and higher education guidance and applications. Students are expected to develop and demonstrate qualities of self-motivation, maturity, resilience and commitment to their studies. We are very proud of the outcomes achieved by our students.

The Sixth Form is an enjoyable and enriching experience. It provides both challenging and stimulating programmes and is housed in new, purpose-built accommodation that includes a study room which is fully equipped with up to date technology, a common room/ kitchen and dedicated teaching rooms.

The Curriculum

Students go to five, hour long lessons, each day, with additional opportunities provided at lunchtime and after school to participate in a wide range of activities.

At Ormiston Rivers Academy we follow the National Curriculum for Years 7 and 8. Our students finish Key Stage 3 in two years, which maximises progress and success. During year 7 and 8 students are mainly taught in sets for each group of subjects, which allows us to differentiate for differing abilities and to tailor teaching and learning for the needs of students. The subjects they will study are: English, Mathematics, Science, French, Geography, History, Religious Studies, PE, Art and Design, Music, Drama, Design & Technology, and Citizenship.

Students take options before moving into Key Stage 4, and at Ormiston Rivers Academy we are committed to offering a range of subjects which enable students to choose a programme of study which best fulfils their ambitions and potential. Many students follow a Baccalaureate curriculum, continuing with traditionally academic subjects like History, Geography and a Language, combined with opportunities to study new subjects like Performing Arts, Psychology or Business. Other students have a clear idea of the career path they wish to follow in the world of work, and choose a more vocational curriculum.

Our Sixth Form, which has its own dedicated facilities, is expanding each year. With over twenty A levels on offer and a range of vocational courses, we aim to have something for everyone.

We are strongly committed to ensuring that we provide opportunities for our most able students to move ahead at a faster pace. Setting according to ability enables the most able groups to move forward quickly.

Religious Studies takes place throughout the Academy. All students are given the opportunity to discover Christian heritage and beliefs as well as exploring the central elements of other World Faiths. Religious Studies is an important part of the Academy's cultural and moral education and

students are given several chances to visit centres of World Faiths.

Parents are offered the opportunity to discuss the content of the course with a senior member of staff and withdraw their child if there are religious grounds for doing so. Students who are withdrawn from Religious Studies undertake private studies.

Appropriate and responsible sex education is an important element in the work of schools in preparing students for adult life. It calls for careful and sensitive treatment by well-prepared teachers and is a key issue as part of our 'Healthy Schools' programme. The physical aspects of sexual behaviour are covered within the teaching of Biology in Science. This begins in Year 7 and various aspects are taught throughout the first three years. Students are also given information on various aspects of sexual health.

Parents are the key figures in helping their children to cope with the physical and emotional aspects of growing up and in preparing them for the challenges and responsibilities which sexual maturity brings. The teaching offered by the Academy is complementary to and supportive of the role of parents, but some parents may not feel able to discuss sexual matters fully and freely with their children. Because of this the Academy has a clear responsibility to ensure that students are adequately prepared for adult life.

Other elements of personal and social education place more emphasis on the broader emotional and ethical dimensions of sexual attitudes within secure relationships and family life. Use is made of outside speakers for certain topics (for example; from the local health authority and local churches). Parents are offered the opportunity to discuss the content of the course with a senior member of staff and withdraw their child if they so desire.

Exam Results

GCSE

The Academy celebrated its best ever GCSE and GCE results in 2017.

Progress 8 scores rate amongst the best in the country at +0.6.

In the recent Ormiston Academies Trust review, inspectors commented “Attainment at GCSE is above average, which represents good progress”.

The Academy continues to grow and flourish with over 70% of Year 11 students moving up into Rivers Sixth Form.

A Level

The Academy also excelled in their results for A Level examinations with many students winning places at top universities.

Some 14% of grades achieved are top grades (A* to A), 37 percent are A*-B, and 60 percent are A*-C. In all, 94% of grades were passes. This is a significant increase in the number of top grades at A-level achieved by students at the academy.

The academy’s average academic grade was boosted almost a whole grade to C, and the average academic points score was up by 5 percentage points to 29. Meanwhile, the ‘value added’ score in both academic and vocational measures were also up.

These set of excellent results support the sustained growth in numbers for entry into the sixth-form for 2017. The majority of this year’s Year 12 will progress to Year 13 and the number of applicants for Year 12 has remained significantly high.



Ofsted

The Academy received its most recent Ofsted inspection in September 2016 when it was judged as “Good” overall, having secured “Good” judgements in all four areas under inspection:

- Achievement of pupils
- Quality of teaching
- Behaviour & safety of pupils
- Leadership and management.

The inspectors noted that “Ormiston Rivers Academy is an industrious environment, where staff and pupils work together harmoniously and without complacency. Pupils achieve and behave well... Pupils appreciate the work of the staff and try hard in lessons because they want to do well.”

Visit www.ormistonriversacademy.co.uk to see the full report or view it at www.ofsted.gov.uk

OAT Review

As part of the Ormiston Academies Trust family of schools, the Academy is entitled to an annual review. This is undertaken by a fully trained Ofsted inspection team.

The Inspection review in June 2016 assessed the Academy as firmly “Good” in all four Ofsted areas. They commented that “Leaders have high ambitions for the academy and their relentless search for improvements have sustained and strengthened the academy’s overall effectiveness”. They went on to say, “the strengths of teaching include good questioning. It is evident from students’ articulate responses that they are used to being called upon to explain their thinking”.

Able, Gifted and Talented Provision

Students who are Able, Gifted and Talented are identified at an early stage with the help of primary school information, Key Stage 2 SAT results and Year 7 test results (based on CATS tests undertaken by every Year 7 student on entry into the Academy).

Achievement Directors oversee the provision for our most able youngsters. As a result we are able to offer diverse and enriching experiences for our most able students, including work with other educational establishments and aspirational visits to universities, including Oxford and Cambridge.

Our monitoring and mentoring programmes enable us to identify specific talents in students whether this be academic or more physical skills such as sport or performing arts. In 2017 a Year 9 student achieved an AS level in Creative Writing and two students performed in West Side Story at the Palace Theatre in Southend. In addition, students have achieved county and national honours in various sports.

The Academy has been awarded National Accreditation for its Gifted and Talented provision; an outstanding achievement enjoyed by only 26 schools nationwide.

Special Educational Needs Provision

The aim of the Academy's Special Educational Needs policy is to celebrate the success of all students and to encourage them to make a contribution to all aspects of Academy life. We want to ensure that individual students make progress in their learning to achieve their maximum potential and that teaching allows all students to learn effectively.

The Special Education Needs policy has been updated to take into account the new 'Special Educational Needs Code of Practice'.

Early indication of the special educational needs of any student is essential. This is accomplished via close liaison with the feeder primary schools prior to the student's entry and by a comprehensive system of assessment measures within the Academy.

For students to achieve success, it is vital that there is consistency in approach and regular contact between parents and the Academy. Targets set will identify areas to be developed at home and the Academy highly values parents' support in this aspect of their child's development.

The Special Educational Needs Department supports students in a number of ways. Many students benefit from having a learning support assistant in the classroom, in addition to the

teacher, to provide in-class support in both practical and academic lessons. There are opportunities for individual support and for working in small groups, either with the SEN specialist teacher or from a learning support assistant. However, the general principle is not to extract from normal classes unless the identified need can be most effectively addressed by doing so. The department works closely with the following agencies, drawing on their support and expertise to support students as required:

- ◆ The Educational Psychology Service
- ◆ Behaviour support teacher
- ◆ Specialist teachers, e.g. for Dyslexia
- ◆ Careers advice within the Academy
- ◆ Education Welfare Office
- ◆ Social Services
- ◆ Child & Family Consultation Service

The recent OAT review commented that, "students receiving support for special educational needs made good progress last year, compared to students of similar prior attainment nationally."

Uniform Policy

Academy Uniform and Clothing Policy

Every student is expected to wear the Academy uniform with pride and respect. Our students will be the leaders of tomorrow and it is important that they understand what it means to present oneself professionally.

Overall identity

The Academy uniform has been designed to reflect the high aspiration we have for our students. It is clearly identifiable within the local community and beyond; students should wear it in an exemplary manner at all times including whilst travelling to and from the Academy to represent us with pride.

Our uniform policy requires the support of parents. The 'contract' between the Academy and parents makes it clear that parents are obliged to provide the required uniform as set out in this booklet. In addition, all students are required to wear specified Academy PE uniform for all PE and sports. This must be purchased from the official Academy suppliers or via the Academy shop.

Hair

A student's haircut is a very important part of their presentation. The Academy will not accept students having extreme haircuts, e.g. Mohican or shaved less than a grade 1. Students are not allowed to have extreme hair colours. Colour change should appear natural. Shoulder length hair should be tied back for all practical lessons.

Make up and nail polish

Make up is not permitted in Years 7 to 9. Students in Years 10 to 14 may wear unobtrusive make up at the Academy's discretion. Nail varnish is not permitted.

Jewellery

Students may wear a wristwatch and one pair of stud earrings (one in each ear). No other form of facial or body piercing is permitted. Students may wear a cross for religious reasons but it may not be visible. Students with medical conditions can wear an identity tag. All jewellery must be removed for Physical Education.

Lost Property

All items should be clearly marked with a permanent marker or name label. Valuable items or large sums of money should not be brought into school. The Academy does not accept responsibility for loss of valuables; items brought into the Academy are at your own risk.

Bags

Students need a large plain bag (no decoration or logos) in which to carry their books and materials.

Academy Uniform and Equipment Shop


The Academy shop is open every day 8.30 - 8.45am, every break time and lunchtime. The shop stocks all the necessary equipment for our students to arrive at lessons equipped to learn.

Equipment for Learning

All students are required to have sufficient equipment to allow them to learn and achieve their full potential. This must include:

- ◆ Art sketchbook (A4 for KS3, A3 for KS4)
- ◆ 2 x black pens
- ◆ 1 x purple pen for assessment feedback
- ◆ 2 x pencils
- ◆ 1 x 30cm ruler
- ◆ Coloured pencils (not felt tips)
- ◆ Eraser
- ◆ Pencil sharpener
- ◆ Mini White board, white board pen and eraser
- ◆ Maths set (including a scientific calculator)
- ◆ Learning Journal (provided by the Academy)
- ◆ Tippex / liquid paper is not allowed

Uniform can be ordered on line directly from the academy supplier www.yourschoolwear.co.uk via the Academy: csurman@ormistonriversacademy.co.uk or by completing an order form which is available from main reception.

| COMPULSORY ITEMS | |
|--|---|
| (Available from Official Academy supplier & Academy Shop) | |
| Boys | Girls |
| <ul style="list-style-type: none"> Academy Blazer with blue trim and Ormiston Rivers Academy badge Official Academy style black trousers Academy clip on tie Academy jumper with blue trim | <ul style="list-style-type: none"> Academy Blazer with blue trim and Ormiston Rivers Academy badge Official Academy black bootcut trousers or Academy tartan mock kilt. Kilts should be no more than 5cm above the knee. Academy jumper with blue trim |
| COMPULSORY SCHOOL ITEMS (Available from any supplier) | |
| <ul style="list-style-type: none"> White traditional tailored school shirt that can be done up to the top button (long or short sleeves) Grey or Black socks Black school shoes (see information) | <ul style="list-style-type: none"> White revere collar girls blouse (long or short sleeves)  Knee high black socks or black or neutral tights Patterned tights, leggings, over the knee and ankle socks are not permitted. Black school shoes (see information) |
| <p>INFORMATION</p> <ul style="list-style-type: none"> Footwear must be plain black school shoes. Trainers or trainer style shoes e.g. Vans, Converse, Toms, are not permitted even if they are black. Boots, of any kind, platforms, sandals, sling backs and fashion shoes are not allowed. Kickers are permitted but must be black with black stitching and black laces. Shoes should not have heels over 2cm. Trousers are to be official Academy black boot cut trousers for girls and traditional black school trousers for boys. Drill cotton, canvas or elastic type material is not permitted. Decorative belts, combat style trousers, cropped trousers and leggings are not permitted. Only the official Academy jumper is permitted, sweatshirts and hoodies are not to be worn. Plain Dark Overcoat - Overcoats should have no decoration or large logos on them and should be dark in colour. Leather, plastic, denim and 'fashion' coats are not permitted. Coats, scarves, hats and gloves must not be worn inside the Academy. Sweatshirts or 'hoodies' of any description do not qualify as coats and may not be worn. | |

COMPULSORY PHYSICAL EDUCATION UNIFORM

(Available from Official Academy supplier & Academy Shop)

BOYS

GIRLS

- Black reversible rugby shirt with blue trim
- Black polo shirt with blue trim and Academy logo
- Plain Black Shorts with Academy logo
- Long black socks

- Black reversible rugby shirt with blue trim
- Black polo shirt with blue trim and Academy logo
- Plain Black Shorts with Academy logo
- Long black socks

(Available from any supplier)

- Football boots
- Training shoes with non-marking soles (not plimsolls, Vans, Converse etc.)
- Shin pads
- White ankle socks

- Football boots
- Training shoes with non-marking soles (not plimsolls, Vans, Converse etc.)
- Shin pads
- White ankle socks

OPTIONAL P.E. ITEMS (Available from Official supplier & Academy Shop)

- Academy black showerproof coat with logo
- Academy black tracksuit bottoms with logo
- Academy black fleece with piping and logo

- Academy black showerproof coat with logo
- Academy black tracksuit bottoms with logo
- Academy black fleece with piping and logo
- Black Skort with Academy logo (can be worn instead of shorts)
- Black Academy leggings with logo

Admissions Policy

Admission arrangements

All applications for entry into Year 7 must be made in accordance with the co-ordinated admission scheme operated by the child's home Local Authority. For children resident in Essex this is published by Essex County Council in the Secondary Education in Essex booklet. Applications for admission to Year 7 must be received by the National Closing Date - 31st October.

Admissions Policy for entry in September 2017

Ormiston Rivers Academy is an 11-18 co-educational Academy with one admission age group in Year 7 and one admission age group in Year 12.

There is no guarantee of a place for children living in the priority admission area. In the event of oversubscription any remaining places will be allocated using the following criteria in the order given:

1. Looked after children and previously looked after children;
2. Children living in the priority admission area with a sibling attending the Academy;
3. Other children living in the priority admission area;
4. Children living outside the priority admission area with a sibling attending the Academy;
5. Remaining applicants

In the event of oversubscription within any of the above criteria, priority will be determined by straight line distance from home to the Academy; those living closest being given highest priority. Exceptional medical circumstances (supported by medical evidence) may override the above criteria (other than Looked After Children and previously looked after children).

Please see the Academy website for full details:
www.ormistonriversacademy.co.uk

Special Educational Needs

Children with statements of special educational needs that name the Academy are required to be admitted.

Arrangements for parents to visit the Academy

An Open Evening is held annually in the Autumn Term which allows parents and prospective students to visit different curriculum areas. The Open Evening for 2017/18 will be held on Thursday September 21st. Tours of the Academy during a working day are also available from 25th September 2017 by appointment. In the Summer Term students from our feeder primary schools, together with those allocated a place from outside the catchment area will be invited to attend an Induction Day. Students will experience life in the Academy and have the opportunity to meet other students.

Parents of new Year 7 students are also invited to an Information Evening, which takes place in the Summer term, where they will be given important information and will be able to ask any questions.

Academy policies and procedures

The Academy has in place a full complement of policies and procedures. Some of these have been included here for your information (for example, the uniform policy). Others are available via the Academy website:

www.ormistonriversacademy.co.uk, or direct from the Academy.

If you would like to receive a copy of any of our policies or procedures please ask at the Academy's main reception. However, please note that the Academy may impose a charge for the provision of printed materials, in accordance with our Charging and Remissions Policy, a copy of which may be reviewed via our website or on request at main reception.

The Academy Day

Timing of the Academy day

All students in Years 7 - 10 have a total weekly lesson time of 25 hours. For some students there is also a 'Period 6' timetabled.

The school day begins at 8.45 a.m. with a first bell which indicates that students should proceed to their mentor group for registration. Students are

also required to attend Academic Mentoring sessions with their mentor when requested to do so.

Buses depart from the Academy at 3.25pm. A late bus runs at 4.30pm Monday to Thursday; enabling students to participate in the full array of after school activities.

| | |
|-------------------|---|
| 8.50 to 9.05 am | Mentor/ Registration & Assembly. Assembly Rota: Year 11 - Monday Year 10 - Tuesday Year 9 - Wednesday Year 8 - Thursday Year 7 - Friday |
| 8.50 to 9.05 am | Morning Mentor/Registration (Non-assembly students) |
| 9.05 to 10.05 am | Period 1 |
| 10.05 to 11.05 am | Period 2 |
| 11.05 to 11.35 am | BREAK |
| 11.35 to 12.35 pm | Period 3 |
| 12.35 to 1.35 pm | Period 4 |
| 1.35 to 2.05 pm | LUNCH |
| 2.10 to 2.20 pm | Afternoon Mentor/Registration |
| 2.20 to 3.20 pm | Period 5 |
| 3.20 to 4.20 pm | Period 6 (Sixth Form and Year 11) |

Term and Holiday Dates Academic Year 2017-18

| | | |
|------------------|--------------|---|
| Autumn Term 2017 | | Monday 4th September to Thursday 21st December 2017 |
| | Half Term | Monday 23rd October to Friday 27th October 2017 |
| | | |
| Spring Term 2018 | | Wednesday 3rd January to Thursday 29th March 2018 |
| | Half Term | Monday 12th February to Friday 16th February 2018 |
| | | |
| Summer Term | | Monday 16th April to Friday 13th July 2018 |
| | Half Term | Monday 28th May to Friday 1st June 2018 |
| | Bank Holiday | Monday 7th May 2018 |
| | | |

Governing Body

| | | | |
|-------------------------|----------------------|---------------------|-------------------|
| Principal | Ms Joan Costello | Community Governors | Father Mark North |
| Chair of Governing Body | Mr Paul Nye | | Mr David McNeill |
| Associate Governors | Mr David Lenz | | Mrs Alice Bush |
| | Mr Stephen Griffiths | | Mrs Jacqui Smith |
| | | | Mrs Karen Rogers |
| | | | Mr Michael Potter |

Academy Staff

| | |
|---------------------------------|--------------------|
| Principal | Ms Joan Costello |
| Vice Principal - (KS3 Lead) | Mrs Jane Morrish |
| Vice Principal - (KS4 Lead) | Mr Paul Healy |
| Vice Principal - (KS5 Lead) | Mrs Jane Bennett |
| Assistant Principal | Mr Alister Bailey |
| Assistant Principal | Miss Louise Judge |
| Assistant Principal | Mr Garret Patton |
| Assistant Principal | Mr John Player |
| SENCo | Mr Rory Costello |
| H R Manager & P.A. to Principal | Mrs Julie Damps |
| Finance and Business Director | Mrs Angela Mahoney |

Academy Details



Ormiston Rivers Academy

Southminster Road

Burnham on Crouch

Essex

CM0 8QB

Tel: 01621 782377

Email: info@ormistonriversacademy.co.uk

Web: www.ormistonriversacademy.co.uk

Status and character: Secondary comprehensive co-educational Academy for students 11-18

Estimated number of students on roll at September 2017: 1025

Maximum number to admit into Year 7 in September 2018: 180



An **OAT** Academy

**Ormiston
Trust**

Ormiston Rivers Academy is
sponsored by Ormiston Trust